



NEWINGTON
LONDON

2 Bedrooms

Apartment

Located in London

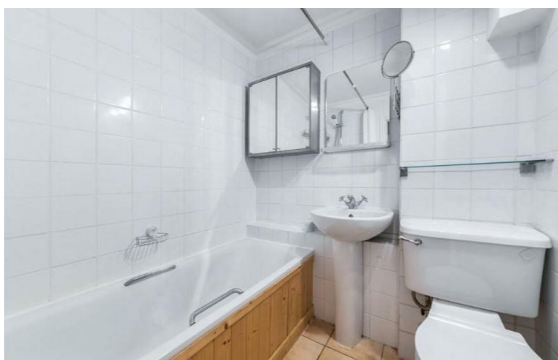
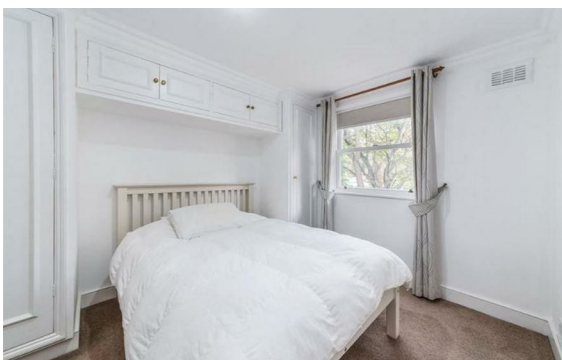
£1,000 Per Month



info@newingtonstates.com

<http://www.newingtonstates.com>

020 7724 2233



NEWINGTON LONDON

60 Upper Montagu Street

London

W1H 1SN

020 7724 2233

info@newingtonstates.com

Spacious and bright two bedroom apartment located on the famous Harley Street in Marylebone. The property comprises two double bedrooms with fitted wardrobes, en suite bathroom, shower room, Carpeted flooring throughout, a modern kitchen and the added benefit of lift access.

Residents of this flat will be able to take full advantage of local amenities such as the world renowned Marylebone High Street and Oxford Street, along with the many great transport links. EPC RATING: C

Energy Efficiency Rating:

Agents Note: Whilst every care has been taken to prepare these particulars, they are for guidance purposes only. All measurements are approximate and are for general guidance purposes only and whilst every care has been taken to ensure their accuracy, they should not be relied upon and potential buyers/tenants are advised to recheck the measurements.

<http://www.newingtonstates.com>